

This document is released under the Creative Commons Attribution-NonCommercial-ShareAlike 3.0 License. (CC BY-NC-SA 3.0)

To view a copy of this license, visit web site [<http://creativecommons.org/licenses/by-nc-sa/3.0/>] Or, send a letter to Creative Commons, 444 Castro Street, Suite 900, Mountain View, California, 94041, USA.

Copyright (C) reserved 2011, Studio NAND (Dairyo Gokan). Website: <http://www.studio-nand.com/>

All trademarks represented in this document are registered by their respective owners.

NANDethno Pocket Mega #A (ALL)

[Generic Prototyping Board /w ATmega644/1284]

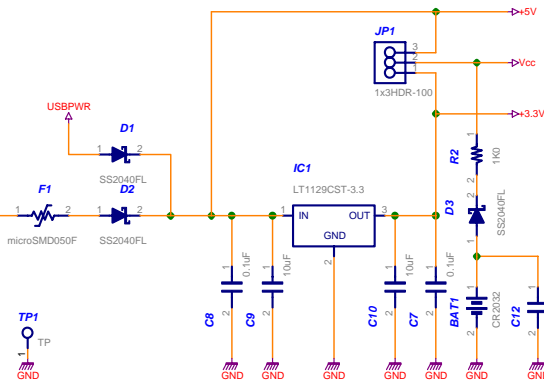
STUDIO NAND	
NANDethno Pocket MegaA	
Creation Date	2011/12/08
Sheet Size A2	Modified Date 2011/12/08
	A



*** 3.3V LDO Regulator IC Selection Guide ***

Order Part Number	Dropout Voltage	Output Current	MAX. Input Voltage
LT1129CST-3.3#PBF	400mV	700mA	+/-30V
LT1129IST-3.3#PBF	400mV	700mA	+/-30V
LT1963EST-3.3#PBF	340mV	1.5A	+/-20V
LT1963AEST-3.3#PBF	340mV	1.5A	+/-20V

JP1 Setting	Supply Voltage (Vcc)
	5V 3.3V Reg. required
	3.3V 3.3V Reg. not required

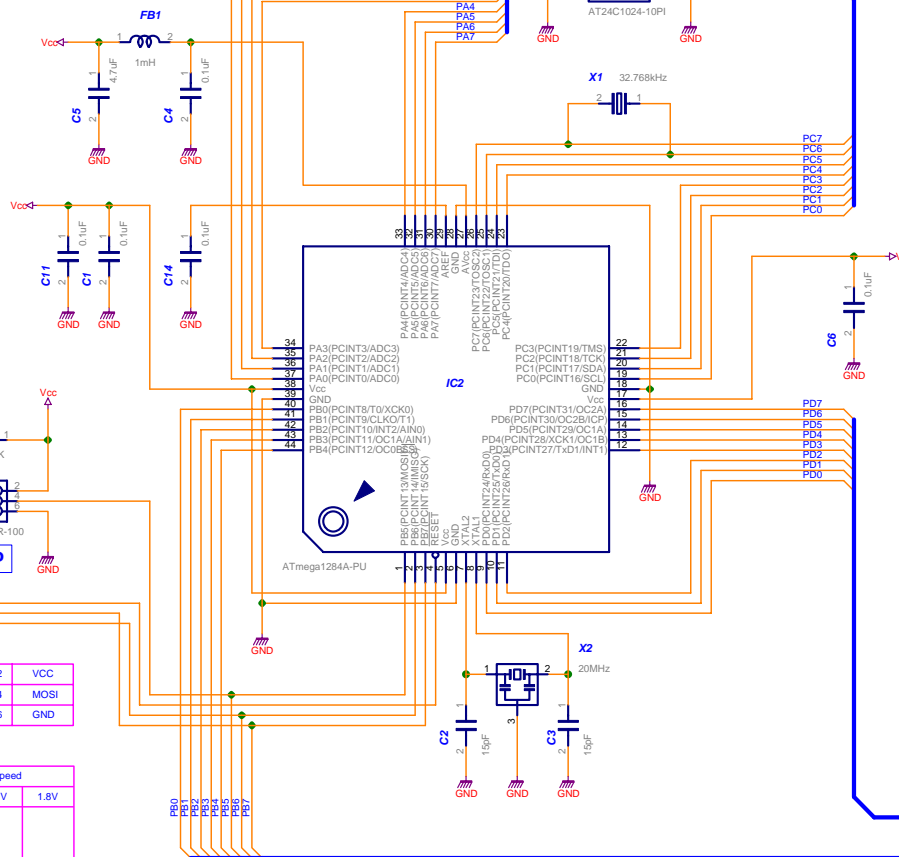


	1	2	VCC
MISO	1	2	VCC
SCK	3	4	MOSI
RST	5	6	GND



*** MCU Selection Guide ***

MCU (IC1)	ROM	RAM	EEPROM	Power Supply	Digkey Part #	Max Speed		
						4.5V	2.7V	1.8V
ATmega164A-AU	16K	1024	512	1.8V to 5.5V	ATMEGA164A-AU-ND	20MHz	10MHz	4MHz
ATmega164PA-AU					ATMEGA164PA-AU-ND			
ATmega324A-AU	32K	2048	1024		ATMEGA324A-AU-ND			
ATmega324PA-AU					ATMEGA324PA-AU-ND			
ATmega644A-AU	64K	4096	2048		ATMEGA644A-AU-ND			
ATmega644PA-AU					ATMEGA644PA-AU-ND			
ATmega1284-AU	128K	16K	4096		ATMEGA1284-AU-ND			
ATmega1284P-AU					ATMEGA1284P-AU-ND			



bit-0	PA0 (ADC0/PCINT0)	37
bit-1	PA1 (ADC1/PCINT1)	36
bit-2	PA2 (ADC2/PCINT2)	35
bit-3	PA3 (ADC3/PCINT3)	34
bit-4	PA4 (ADC4/PCINT4)	33
bit-5	PA5 (ADC5/PCINT5)	32
bit-6	PA6 (ADC6/PCINT6)	31
bit-7	PA7 (ADC7/PCINT7)	30

bit-0	PC0 (PCINT16/SCL)	19
bit-1	PC1 (PCINT17/SDA)	20
bit-2	PC2 (PCINT18/TCK)	21
bit-3	PC3 (PCINT19/TMS)	22
bit-4	PC4 (TDO/PCINT20)	23
bit-5	PC5 (TDI/PCINT21)	24
bit-6	PC6 (TOSC1/PCINT22)	25
bit-7	PC7 (TOSC2/PCINT23)	26

bit-0	PD0 (PCINT24/RXD0/T3)	9
bit-1	PD1 (PCINT25/TXD0)	10
bit-2	PD2 (PCINT26/RXD1/INT0)	11
bit-3	PD3 (PCINT27/TXD1/INT1)	12
bit-4	PD4 (PCINT28/XCK1/OC1B)	13
bit-5	PD5 (PCINT29/OC1A)	14
bit-6	PD6 (PCINT30/OC2B/ICP)	15
bit-7	PD7 (PCINT31/OC2A)	16

bit-0	PB0 (XCK0/T0/PCINT8)	40
bit-1	PB1 (T1/CLK0/PCINT9)	41
bit-2	PB2 (AIN0/INT2/PCINT10)	42
bit-3	PB3 (AIN1/OC0A/PCINT11)	43
bit-4	PB4 (SS/OC0B/PCINT12)	44
bit-5	PB5 (PCINT13/ICP3/MOSI)	1
bit-6	PB6 (PCINT14/OC3A/MISO)	2
bit-7	PB7 (PCINT15/OC3B/SCK)	3

[I/O Port Pin Assignment]

NANDethno Pocket Mega #A (1/3)

[Generic Prototyping Board /w ATmega644/1284]

All trademarks represented in this document are registered by their respective owners.

STUDIO NAND

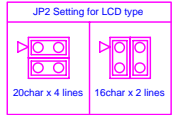
NANDethno Pocket MegaA

Creation Date **2011/12/08**

Sheet Size A2	Modified Date 2011/12/08	A
----------------------	---------------------------------	----------

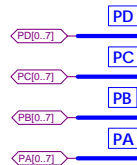
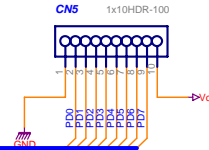
BLK	16	15	BLA
DB7	14	13	DB6
DB5	12	11	DB4
DB3	10	9	DB2
DB1	8	7	DB0
E	6	5	R/W
PA0	4	3	VADJ
GND/VCC	2	1	VCC/GND

LCD-I/F



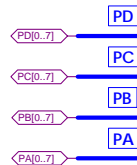
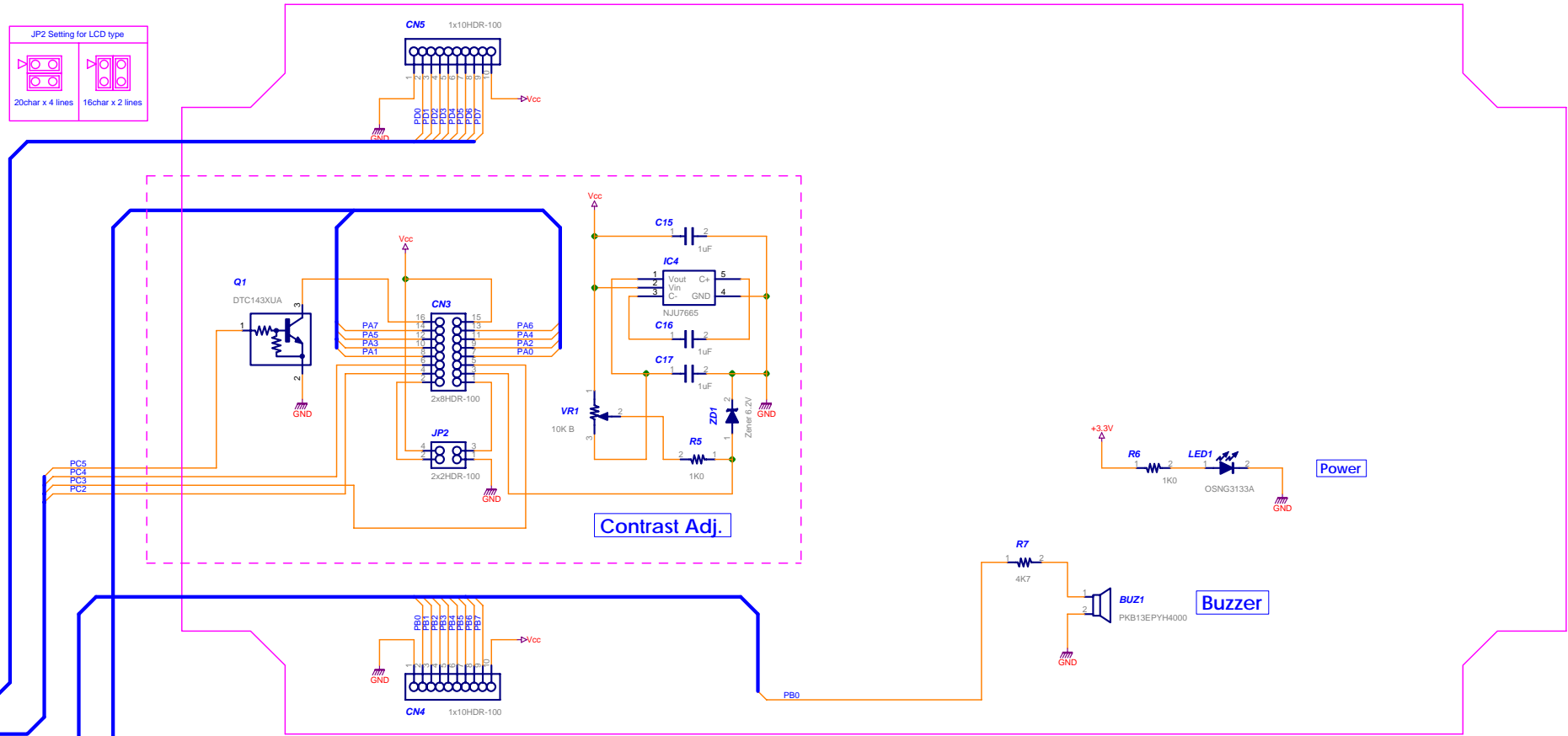
1	GND
2	PD0 (PCINT24R/DINT3)
3	PD1 (PCINT25TXD0)
4	PD2 (PCINT26RXD0/INT0)
5	PD3 (PCINT27TXD0/INT1)
6	PD4 (PCINT28XCK/IOCC1B)
7	PD5 (PCINT29OC1A)
8	PD6 (PCINT30OC2B/ICP)
9	PD7 (PCINT31OC2A)
10	Vcc

Port-D



1	GND
2	PB0 (XCK/TP/PCINT8)
3	PB1 (T1CLK/PCINT9)
4	PB2 (AN0/INT2/PCINT10)
5	PB3 (AN1/IOA/PCINT11)
6	PB4 (SS/O0B/PCINT12)
7	PB5 (PCINT13/CF3/MOS1)
8	PB6 (PCINT14/CC3/MISO)
9	PB7 (PCINT15/OC3B/SCK)
10	Vcc

Port-B

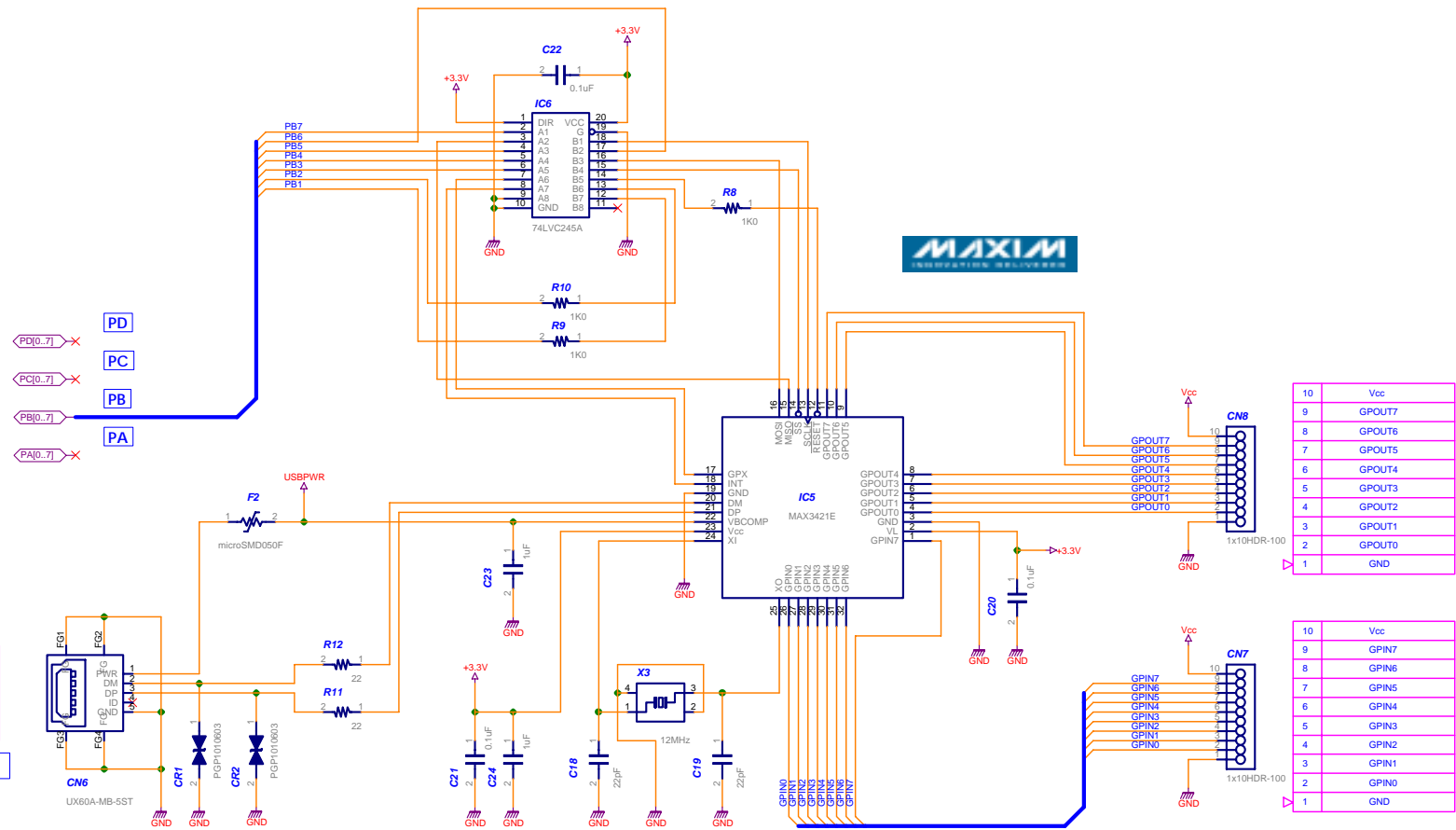


All trademarks represented in this document are registered by their respective owners.

NANDethno Pocket Mega #A (2/3)

[Generic Prototyping Board /w ATmega644/1284]

STUDIO NAND	
NANDethno Pocket MegaA	
Creation Date	2011/12/08
Sheet Size A2	Modified Date 2011/12/08
	A

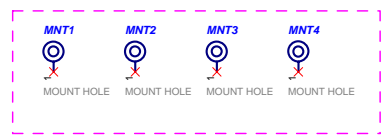


Mini-USB

1	BusPwr
2	DATA-
3	DATA+
4	N.C.
5	GND

10	Vcc
9	GPOUT7
8	GPOUT6
7	GPOUT5
6	GPOUT4
5	GPOUT3
4	GPOUT2
3	GPOUT1
2	GPOUT0
1	GND

10	Vcc
9	GPIN7
8	GPIN6
7	GPIN5
6	GPIN4
5	GPIN3
4	GPIN2
3	GPIN1
2	GPIN0
1	GND



Mounting Holes



NANDethno Pocket Mega #A (3/3)

[Generic Prototyping Board /w ATmega644/1284]

All trademarks represented in this document are registered by their respective owners.

STUDIO NAND		
NANDethno Pocket MegaA		
Creation Date		2011/12/08
Sheet Size A2	Modified Date	2011/12/08
		A