

This document is released under the Creative Commons Attribution-NonCommercial-ShareAlike 3.0 License. (CC BY-NC-SA 3.0)

To view a copy of this license, visit web site [<http://creativecommons.org/licenses/by-nc-sa/3.0/>] Or, send a letter to Creative Commons, 444 Castro Street, Suite 900, Mountain View, California, 94041, USA.

Copyright (C) reserved 2011, Studio NAND (Dairyo Gokan).
Website: <http://www.studio-nand.com/>

All trademarks represented in this document are registered by their respective owners.

NANDethno Pocket Mega #D (ALL)

[Generic Prototyping Board /w ATmega644/1284]

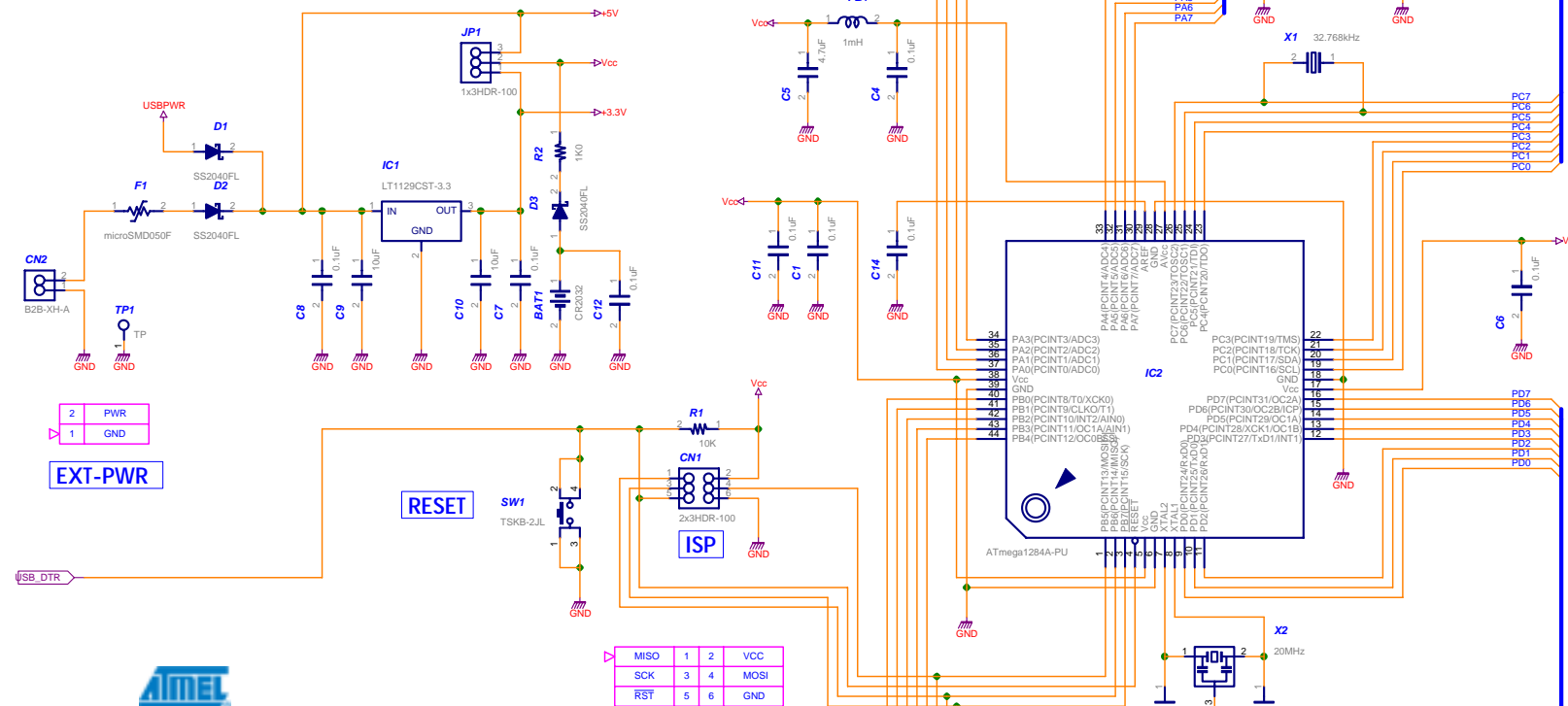
STUDIO NAND 	
NANDethno Pocket MegaD	
Creation Date	2011/12/08
Sheet Size A2	Modified Date 2011/12/08
	A



*** 3.3V LDO Regulator IC Selection Guide ***

Order Part Number	Dropout Voltage	Output Current	MAX. Input Voltage
LT1129CST-3.3#PBF	400mV	700mA	+/-30V
LT1129IST-3.3#PBF	400mV	700mA	+/-30V
LT1963EST-3.3#PBF	340mV	1.5A	+/-20V
LT1963AEST-3.3#PBF	340mV	1.5A	+/-20V

JP1 Setting	Supply Voltage (Vcc)
	5V
	3.3V Reg. required
	3.3V
	3.3V Reg. not required



2	PWR
1	GND

EXT-PWR

RESET

MISO	1	2	VCC
SCK	3	4	MOSI
RST	5	6	GND



*** MCU Selection Guide ***

MCU (IC1)	ROM	RAM	EEPROM	Power Supply	Digikey Part #	Max Speed		
						4.5V	2.7V	1.8V
ATmega164A-AU				1.8V to 5.5V	ATMEGA164A-AU-ND	20MHz	10MHz	4MHz
ATmega164PA-AU	16K	1024	512		ATMEGA164PA-AU-ND			
ATmega324A-AU	32K	2048	1024		ATMEGA324A-AU-ND			
ATmega324PA-AU					ATMEGA324PA-AU-ND			
ATmega644A-AU					ATMEGA644A-AU-ND			
ATmega644PA-AU	64K	4096	2048		ATMEGA644PA-AU-ND			
ATmega1284-AU					ATMEGA1284-AU-ND			
ATmega1284P-AU	128K	16K	4096		ATMEGA1284P-AU-ND			

PA

bit-0	PA0 (ADC0/PCINT0)	37
bit-1	PA1 (ADC1/PCINT1)	36
bit-2	PA2 (ADC2/PCINT2)	35
bit-3	PA3 (ADC3/PCINT3)	34
bit-4	PA4 (ADC4/PCINT4)	33
bit-5	PA5 (ADC5/PCINT5)	32
bit-6	PA6 (ADC6/PCINT6)	31
bit-7	PA7 (ADC7/PCINT7)	30

PC

bit-0	PC0 (PCINT16/SCL)	19
bit-1	PC1 (PCINT17/SDA)	20
bit-2	PC2 (PCINT18/TCK)	21
bit-3	PC3 (PCINT19/TMS)	22
bit-4	PC4 (TDO/PCINT20)	23
bit-5	PC5 (TDI/PCINT21)	24
bit-6	PC6 (TOSC1/PCINT22)	25
bit-7	PC7 (TOSC2/PCINT23)	26

PD

bit-0	PD0 (PCINT24/RXD0/T3)	9
bit-1	PD1 (PCINT25/TXD0)	10
bit-2	PD2 (PCINT26/RXD1/INT0)	11
bit-3	PD3 (PCINT27/TXD1/INT1)	12
bit-4	PD4 (PCINT28/XCK1/OC1B)	13
bit-5	PD5 (PCINT29/OC1A)	14
bit-6	PD6 (PCINT30/OC2B/ICP)	15
bit-7	PD7 (PCINT31/OC2A)	16

PB

bit-0	PB0 (XCK0/T0/PCINT8)	40
bit-1	PB1 (T1/CLK0/PCINT9)	41
bit-2	PB2 (AIN0/INT2/PCINT10)	42
bit-3	PB3 (AIN1/OC0A/PCINT11)	43
bit-4	PB4 (SS/OC0B/PCINT12)	44
bit-5	PB5 (PCINT13/ICP3/MOSI)	1
bit-6	PB6 (PCINT14/OC3A/MISO)	2
bit-7	PB7 (PCINT15/OC3B/SCK)	3

[I/O Port Pin Assignment]

NANDethno Pocket Mega #D (1/3)

[Generic Prototyping Board /w ATmega644/1284]

All trademarks represented in this document are registered by their respective owners.

STUDIO NAND

NANDethno Pocket MegaD

Creation Date 2011/12/08

Sheet Size A2	Modified Date 2011/12/08	A
----------------------	--------------------------	----------

A

B

C

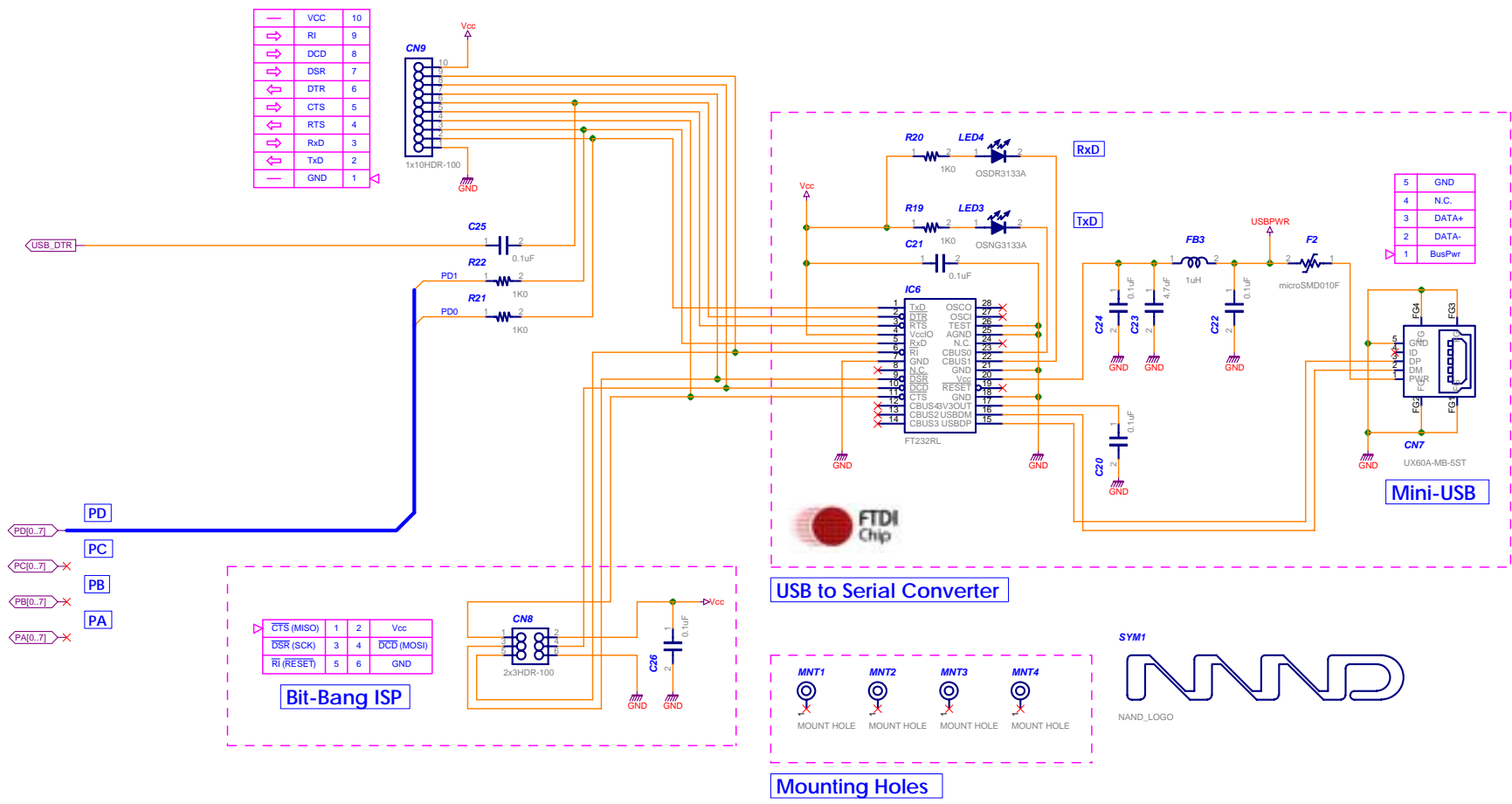
D

E

F

G

H



NANDethno Pocket Mega #D (3/3)

[Generic Prototyping Board /w ATmega644/1284]

All trademarks represented in this document are registered by their respective owners.

STUDIO NAND		NAND
NANDethno Pocket Mega D		
Creation Date		2011/12/08
Sheet Size A2	Modified Date	2011/12/08
		A